

KE 100



EN: KE 100 series, which is the upper mounting model has been designed in a way to meet the anticipation in the site.

The KE 100 series was developed and structured in line with the recommendation and demands of architectures in the application field, it may be used in larger projects such as shopping malls and hotels. The thickness of the glass may be selected optionally between 12-21.52 millimeters.

FR: La série KE 100, qui est le modèle de montage supérieur, a été conçue de manière à répondre aux besoins du chantier.

La série KE 100 a été développée et structurée conformément aux recommandations et aux exigences des architectures dans le domaine, elle peut être utilisée dans des grands projets tels que les centres commerciaux et les hôtels. L'épaisseur du verre peut être choisie en option entre 12-21,52 millimètres.

DE: Die KE 100-Serie, bei der es sich um das obere Montagemodell handelt, wurde so konzipiert, dass die Erwartungen vor Ort erfüllt werden.

Die KE 100-Serie wurde gemäß den Empfehlungen und Anforderungen von Architekturen im Anwendungsbereich entwickelt und strukturiert und kann in größeren Projekten wie Einkaufszentren und Hotels eingesetzt werden.

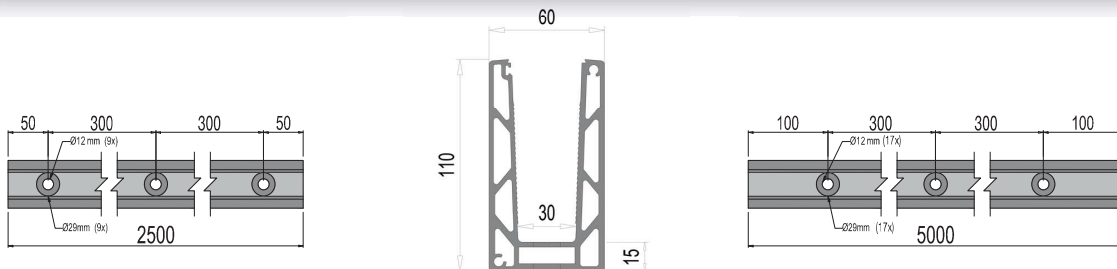


KE 100 CODES

- KE100.250.00
- KE100.500.00



PROFILE DRAWING



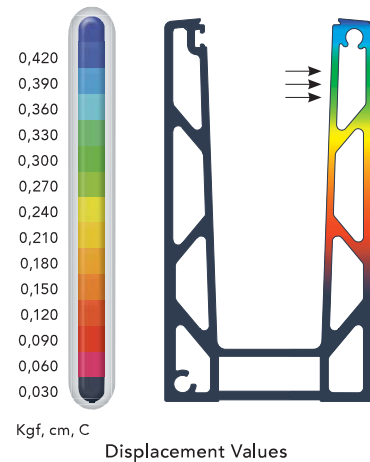
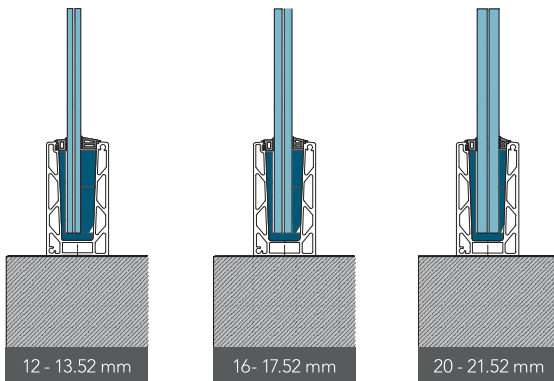


LOAD CAPACITY

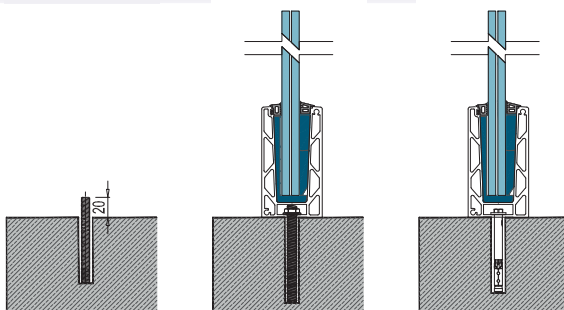
- EN:** Aluminum alloy EN AW 6063 displacement results for 1 mt base profile under 150 kg (1500 N) horizontal load to the highest surface of the profile.
- FR:** Alliage d'aluminium EN AW 6063 résultats de déplacement pour un profil de base de 1 mt sous une charge horizontale de 150 kg (1500 N) sur la surface la plus élevée du profil.
- DE:** Die Verschiebung der Aluminiumlegierung EN AW 6063 ergibt ein Grundprofil von 1 m bei einer horizontalen Belastung von 150 kg (1500 N) auf die höchste Oberfläche des Profils.



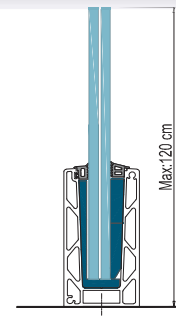
MECHANISM INFO



ANCHORING POSSIBILITY FOR THE KE - 100

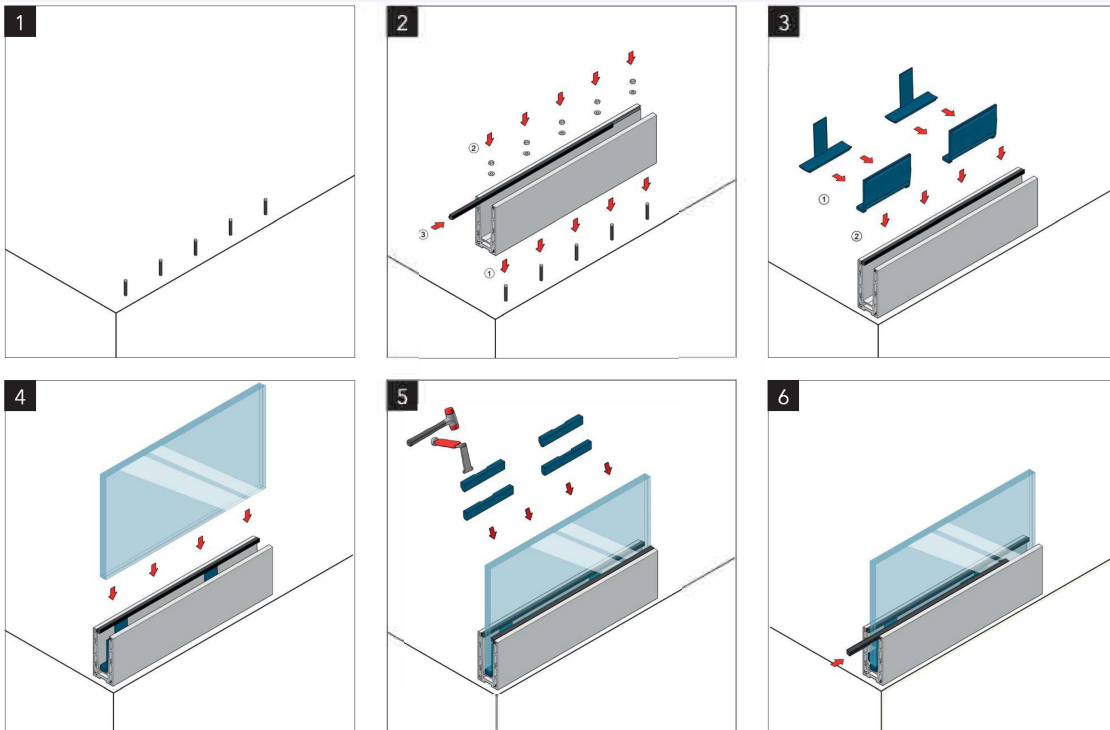


MAXIMUM HEIGHT

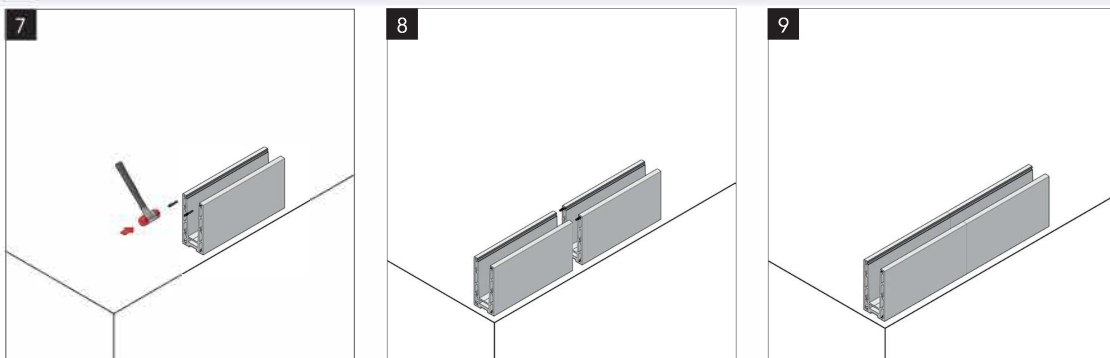


KE 100 - Glass Railing Systems

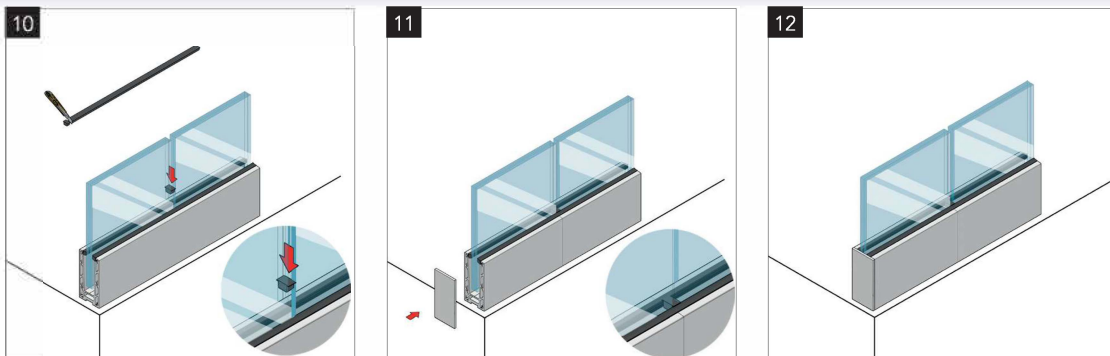
INSTALLATION PART I



INSTALLATION PART II



INSTALLATION PART III





GLASS PROFILE KE 100

| KE 100 | MILL FINISH | MAT ANODISE | BRIGHT ANODISE | STAINLESS STEEL EFFECT | RAL COLOURED |
|---------|-------------|-------------|----------------|------------------------|--------------|
| Length | Code | Code | Code | Code | Code |
| 2500 MM | 100.250.10 | 100.250.20 | 100.250.30 | 100.250.40 | 100.250.50 |
| 5000 MM | 100.500.10 | 100.500.20 | 100.500.30 | 100.500.40 | 100.500.50 |



CORNER 90°

| KE 100 | MILL FINISH | MAT ANODISE | BRIGHT ANODISE | STAINLESS STEEL EFFECT | RAL COLOURED |
|--------|-------------|-------------|----------------|------------------------|--------------|
| INSIDE | Code | Code | Code | Code | Code |
| | 100.100.10 | 100.100.20 | 100.100.30 | 100.100.40 | 100.100.50 |



CORNER 90°

| KE 100 | MILL FINISH | MAT ANODISE | BRIGHT ANODISE | STAINLESS STEEL EFFECT | RAL COLOURED |
|---------|-------------|-------------|----------------|------------------------|--------------|
| OUTSIDE | Code | Code | Code | Code | Code |
| | 100.110.10 | 100.110.20 | 100.110.30 | 100.110.40 | 100.110.50 |



END CAP

| KE 100 | MILL FINISH | MAT ANODISE | BRIGHT ANODISE | STAINLESS STEEL EFFECT | RAL COLOURED |
|--------------|-------------|-------------|----------------|------------------------|--------------|
| LEFT / RIGHT | Code | Code | Code | Code | Code |
| | 100.120.10 | 100.120.20 | 100.120.30 | 100.120.40 | 100.120.50 |



FIXING ANCHOR M10x150

Code

9800.010.00



FIXING ANCHOR M10x110

Code

9800.015.00



FIXING ANCHOR M10x110

Code

9800.075.00

9800.110.00

9800.150.00



EXTENSION PIN M5x50

Code

9850.005.00



| Glass Thickness | Colour | 5000 MM | PCS |
|-----------------|--------|----------------|----------------|
| | | Code | Code |
| 12 - 13.52 mm | RED | KE 5000.012.00 | KE 0001.012.02 |
| 16 - 17.52 mm | BLUE | KE 5000.016.00 | KE 0001.016.02 |
| 20 - 21.52 mm | GREEN | KE 5000.020.00 | KE 0001.020.02 |



KE Glassmove®

| Glass Thickness | Colour | 5000 MM | PCS |
|-----------------|--------|-------------------|-------------------|
| | | Code | Code |
| 12 - 13.52 mm | RED | KE.GM 5000.012.00 | KE.GM 0001.012.02 |
| 16 - 17.52 mm | BLUE | KE.GM 5000.016.00 | KE.GM 0001.016.02 |
| 20 - 21.52 mm | GREEN | KE.GM 5000.020.00 | KE.GM 0001.020.02 |